

19791
Pam. 35
(1934)

GUEST RANCHES



ON LINES OF
Southern Pacific

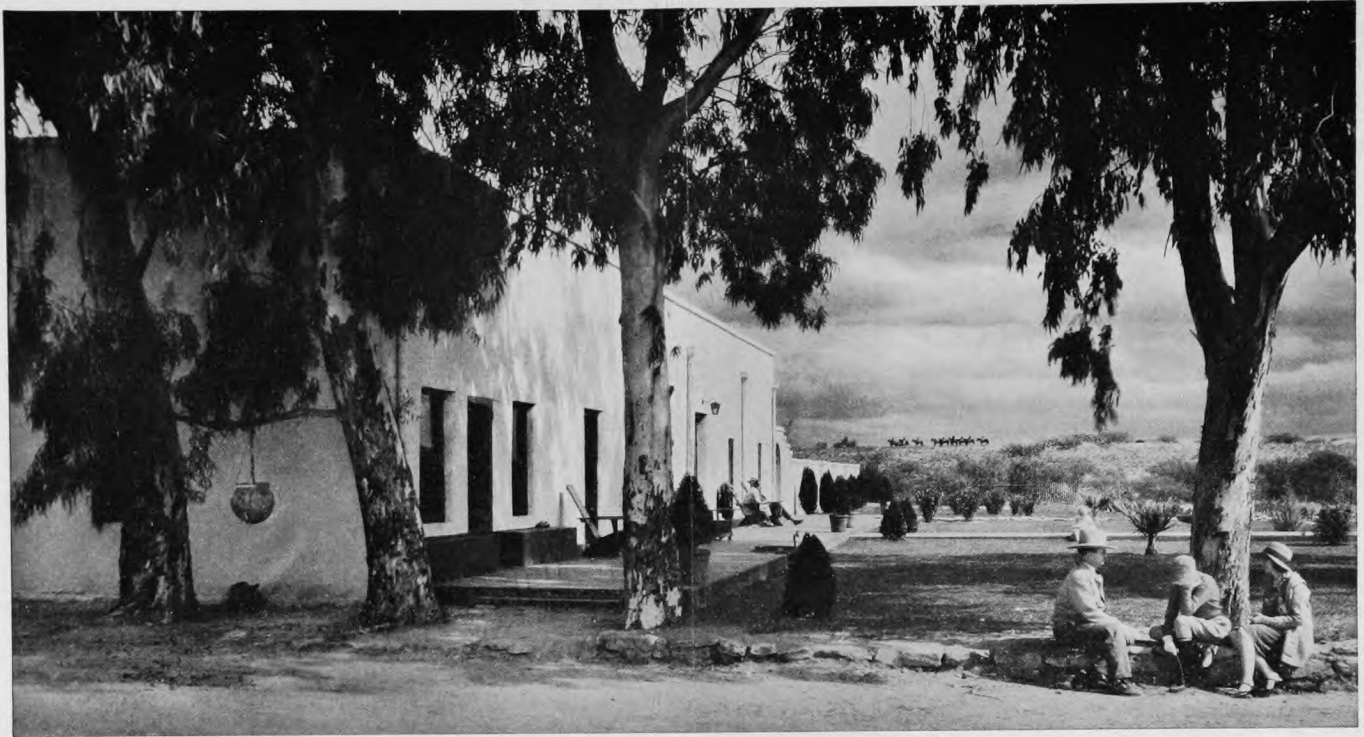


Life On a Guest Ranch

Nor so very many years ago some inspired soul looking for novelty, and more resourceful than his fellows, conceived the happy idea of spending his precious vacation time on a western cattle ranch. He came. The ranch took him in. He was made a member of the family and he entered into its life. Days spent in the open, in the saddle, and nights under the whispering stars wrought their miracles as they always do, and when our vacationist returned to his home tanned, husky, bubbling with renewed vigor, and brimming with vitality, his friends marveled—and followed his example. So popular has this form of holiday become that today there is an increasingly

large number of ranches that cater regularly to these visitors. This booklet is to acquaint you with these guest ranches.

How firm a hold ranch life takes upon the visitor may be inferred from the fact that there are many people who come back to their favorite ranch year after year for relaxation, rest and sport. It is not unusual for visitors to come for a two weeks' stay, and remain for several months. The record is held by a man who arrived at a guest ranch five years ago for a short stay—and is still there. When people take to the life on a guest ranch so strongly there must be some very compelling reason.



Life on a ranch is altogether what the visitor may wish to make it. It may be “the sweet pleasure of doing nothing,” with restful, lazy hours, spent, book in hand, at the ranch house, or one’s own cabin, or beneath the shade of some old forest monarch. One may drowse and dream, or, as the old prospector put it, “jest drowse.” On the other hand, it may be as active an existence as any one could wish. One may join the cowboys as they canter off into the hills or down into the valleys in the course of their daily work; or with canteen and lunch, ride or hike alone or with a party on mountain picnics or excursions of exploration.

On every ranch the chief diversion, naturally, is horseback riding. At most ranches the guest is assigned, immediately upon his arrival, a mount and equipment for his exclusive use so long as he remains. The experience of the rider is carefully considered and his horse furnished according thereto. For those who have not ridden before, mounts docile enough to reassure the most timid are supplied and instruction in riding given. For the guest who likes them spirited, and can handle them, horses are available that will test his prowess in the saddle. Most guests become enthusiastic horsemen

after a few days and are as much at home in the saddle as the regular cowboys.

Some ranches have tennis courts, putting greens and a few holes of practice golf. Others have swimming pools, target ranges, and other entertainment. Many ranches offer excellent hunting and fishing in season—small game on the ranch itself, and big game such as bear, mountain lion, deer, etc., in nearby mountains.

Usually, after a day on the range or in the hills, the thoughts of bed and repose fill the mind to the exclusion of most other matters, and shortly after dinner one is usually well content to “call it a day” and to seek the deep and dreamless sleep that comes to tired bodies and relaxed nerves. However, if one is inclined to play in the evening, there are cards and dancing. Often a picnic by moonlight is arranged, where the guests gather around a roaring campfire and listen to some old-timer spin yarns of the old romantic west, or to the cowboys singing their age old ballads to the accompaniment of banjo and guitar.

Some of the ranches are genuine old-time cattle ranches, still running herds that number into the thousands. Others are old ranches on which cattle are



no longer raised. Still others are modern plants, built at the most advantageous points for the definite purpose of entertaining the tourist who wishes to “rough it” de luxe.

What to Wear

There is little style about a guest ranch and the atmosphere is essentially democratic. Many changes of outer clothing are not necessary. For women, medium weight riding habits, hiking clothes, sweaters and the usual outdoor clothes. Men wear riding breeches, chaparejos or blue jeans, flannel shirts, etc. Boots that you care much for should not be worn as they would be scratched in riding or hiking through the brush. Everyone should be provided with leather jacket, coat or sweater for wear after sunset, and a flashlight. In general, comfort is aimed at, rather than style.

Guest Ranch Seasons

The principal season of the Southern Arizona ranches and at Palm Springs is in the winter time, although there are a number of ranches in Arizona and New Mexico that are open the year around. There are both summer and winter guest ranches in Texas. The Ne-

vada ranches are open the year around, as are the guest ranches in California.

Children

Many of the ranches have special facilities for children where they learn to ride under the expert guidance of cowboys, and the horses assigned to them are always safe and gentle. Many ranches maintain bus service to nearby grade and high schools; others are located on regular school bus lines. A few ranches have special school facilities with trained tutors and supervisors.

The description of each ranch given in the following pages is necessarily brief and if further information is desired you can write to your nearest Southern Pacific representative who will be glad to get further information for you on the ranch in which you may be interested. Or you can write direct to the ranch. Accommodations are limited and reservations should be made in advance. Rates quoted in this folder are accurate at publication but are subject to change. None of these ranches will accept as guests persons with communicable diseases.

Southern Pacific Service to the West

SOUTHERN PACIFIC'S Golden State and Sunset Routes give direct main line service to most of the guest ranches along Southern Pacific Lines. Golden State Route, for example, the direct route between Chicago, Kansas City or St. Louis and Los Angeles or San Diego, runs via El Paso, Texas, and then through Southern New Mexico and Arizona, providing the fastest service to Southern Arizona, center of guest ranch activities. The Golden State Limited is one of the country's famous trains.

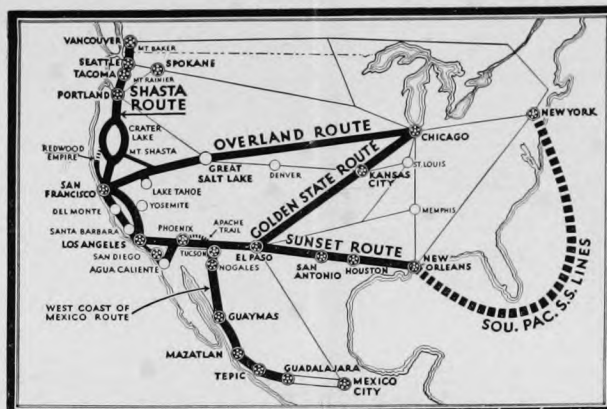
Sunset Route of Southern Pacific, runs from New Orleans through the Old South and Texas to El Paso and then through New Mexico and Southern Arizona to San Diego, Los Angeles and San Francisco. This is the route of the Sunset Limited.

The Most Direct Way

These through trains run directly to Phoenix, Chandler, Tucson, Douglas, Yuma and other Southern Arizona cities—saving many hours, with no change of cars en route.

In visiting these western guest ranches, combine Sunset or Golden State Routes with Shasta or Overland Routes, Southern Pacific's two other transcontinental routes, to provide a round trip that shows you twice as much of the West.

When you choose to *go one way, return another* by Southern Pacific's Four Great Routes you see more of the Pacific Coast and more of the United States than on any other railroad. Each route is crowded with travel attractions, but each has its own characteristics, each different from the other. The charm of the Old South, and Old World New Orleans on the Sunset Route is in direct contrast to the virile and rugged territory you see when you go through the Pacific Northwest and northern United States or Canada. The colorful Southwest with its Spanish atmosphere, along the border, is entirely different from the High Sierra country and the rolling plains of the Overland Route. Yet each has its peculiar charm and the wise traveler arranges his routing so as to get the most for his money, seeing as much as he can with as much variety as possible. He avoids monotony. This variety is gained in most cases without sacrifice of time. At most, there will be but a few hours difference and



they will be hours gained, not wasted. Southern Pacific's four great routes for trans-continental travel are shown on the little map. Over each of these routes we operate a premier train and other fine trains daily. The premier trains—Sunset Limited, Overland Limited, Golden State Limited and Cascade—offer every modern refinement of service including air-conditioned observation, lounge, club,

dining and room cars. Air-conditioned cars manufacture their own climate winter and summer. The air is always clean and fresh. There are no drafts, no stuffiness and noise is deadened. There is no charge for air-conditioned accommodations except the usual rail and Pullman fares. There is no extra fare on any Southern Pacific train. In all trains the same spirit of Southern Pacific is found—a friendly interest in administering to the comfort and pleasure of the traveler.

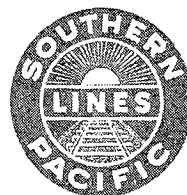
Delicious Low Cost Meals

Eating in a dining car, while the train rushes on, is fun. And if the food is good, your enjoyment becomes perfect.

We are sure you will be delighted with our dining car service. "Meals Select," we call it. Complete luncheons and dinners begin at 80c including soup, salad, entree, vegetables, bread and butter, beverage and dessert. Club breakfasts begin at 50c. A la carte service is also provided. These new meals are served in the traditional Southern Pacific manner. Only the price is changed. We have always served and will continue to serve only the finest foods obtainable.

Oil is used for fuel by all Southern Pacific passenger locomotives so that passengers are not bothered by smoke or cinders. And important, too, in one's comfort is the road-bed. Southern Pacific, long proud of its road-bed, uses rock ballast which makes for dustless, smooth riding travel.

There is a Southern Pacific representative practically in every city and town reached by its lines, also in important cities in the middle west and east, who will gladly help you plan your trip so you will get the most out of the time at your disposal and for the money you wish to spend. Phone or write him and he will take care of all your travel details.



GUEST RANCHES

ALONG SOUTHERN PACIFIC LINES

Listed on these pages are the guest ranches in Texas, New Mexico, Arizona, California, Nevada and Old Mexico served direct or conveniently reached by Southern Pacific lines.

Nearly every guest ranch issues a booklet or folder, usually well illustrated, which gives complete information as to its facilities, and a description of its scenic and other attractions. It is our recommendation that you send for this literature to the ranches in which you are interested. There is no obligation, and with the booklets in your hands the matter of making a satisfactory selection will be greatly facilitated.

The ranches invite correspondence and will be glad to answer any inquiries you desire to make. Reservations should be made direct with the ranch, and should always be made in advance, as accommodations may not always be available at the height of the season.

The data on these pages has been carefully compiled from current information furnished us direct by the ranches, and while Southern Pacific assumes no responsibility for its accuracy, we believe it to be a correct representation of facts regarding the ranches enumerated at the date of issue.

Southern Pacific

Corrected to January 1, 1938.

ARIZONA GUEST RANCHES

BAR F X RANCH. V. L. McDonald, manager. Mail and telegraph address, Wickenburg, Arizona. Season, September 15 to June 1. 20 guests. Rooms have steam heat and stove, private bath, electricity. Rates \$45 per week and up, American plan, includes horses and all ranch activities. Special monthly and family rates. Take Southern Pacific to Phoenix, Arizona, where visitors are met by ranch car. Distance to ranch, 54 miles. Horseback riding, putting green, target range, tennis, badminton, horseshoe and croquet courts, practice polo.

BAR O RANCH. Harry C. Kendall, owner. Mail and telegraph address, Tombstone, Arizona. Season, January 1 to April 31. 15 guests. Accommodations from plain cabins to those with all modern conveniences. Rates from \$40 to \$50 per week, American plan, including saddle horses. Pack trips extra. Take Southern Pacific to Fairbank, Arizona, where visitors are met by ranch car. Distance, Fairbank to ranch, 21 miles; transportation \$5 per person. A genuine cattle ranch of over fifty years' activity, affording an opportunity for real cowboy adventure.

BAR 37 RANCH. Ned Andrews, proprietor. Mail address, Camp Wood, Arizona. Telegraph address, Prescott, Arizona. Season April 1 to November 15. 12 guests. Individual log cabins. Rates, \$45 to \$50 per week, American plan, including saddle horses. Pack trips extra. Located 50 miles northwest of Prescott, Arizona.

BELLA VISTA RANCH. Mr. and Mrs. Charles R. Conrad, owners. Address, Route 4, Box 567, Grant Road, Tucson, Arizona. 15 to 20 guests. Rates, \$45 and up per week, \$150 and up per month. Horses, \$30 per month extra, including guide when required. Take Southern Pacific to Tucson, Arizona.

BISHOP'S GUEST RANCH. Mail and telegraph address, Tempe, Arizona. Open the year 'round. 10 guests. Accommodations in main building and cottages—modern, comfortable. Rates, single, \$25 per week, \$90 per month. Saddle horse, \$15 per month. Take Southern Pacific to Tempe, Arizona, where ranch car meets guests. Distance to ranch, 2 miles. Horseback riding, croquet, desert picnics, motor trips. Golf course near by.

BORDER RANCH. Rudy Becker, manager. Mail and telegraph address, Hereford, Arizona. 20 guests. Summer season, May 15 to September 15. Winter season, September 15 to May 15. Accommodations in main guest house or private cabins. Hot and cold water, electricity and bath or shower. Rates, summer, \$70 a week, single, \$50 a week and up, double; winter, \$80 a week, single, \$60 a week and up, double. Rates include saddle horses and all activities of ranch including transportation from and to the railroad station. Take Southern Pacific to Hereford, Arizona. Distance of ranch from station, 15 miles. All guests met. A real cattle ranch near the Mexican border. Elevation, 5300 feet.

CARR CANYON RANCH. Capt. J. H. Healy, manager. Mail and telegraph address, Hereford, Arizona. Open all year. 12 guests. Single or double rooms with bath; all modern accommodations. Rate, \$35 per week, includes saddle horse, guide and pack trips. Take Southern Pacific to Hereford, Arizona. Station to ranch, 12 miles. Riding, small and big game hunting.

CASA HERMOSA GUEST RANCH. Lon Megargee, general manager. Mail address, Box 645, Phoenix, Arizona. Telegraph address, Phoenix. Season October 1 to May 1. Bath or shower in every room. Guest house apart from main structure. Steam heat, fireplaces. Rates, \$50 per week and up, include everything except horses. Located ten miles from Phoenix. Take Southern Pacific to Phoenix, Arizona, where you will be met by appointment.

CIRCLE "Z" RANCH. Mr. and Mrs. L. G. Zinsmeister, owners and managers. Mail address, Patagonia, Arizona. Telegraph address, Circle "Z" Ranch, Arizona. 60 guests. Modern rooms with private or connecting bath. Winter season, October 1 to May 15. Summer season, July and August. Rates, \$45 to \$70 per week, American plan, including horses and daily guide with group. Extra charge for private guide. Take Southern Pacific to Fairbank from the East; to Nogales from the West. Ranch car meets guests. Fairbank to ranch, 50 miles; Nogales to ranch, 15 miles. Mountain cabin 20 miles from ranch; small extra charge for trips. Horseback riding, swimming, tennis, quoits, target shooting, croquet.

CROSS ANCHOR RANCH. W. P. Sinnett, Jr., owner. Mail address, P. O. Box 2230, Tucson, Arizona. Open all year. 15 guests. Accommodations in main building and guest houses. Rates, \$30 to \$50 per week, including saddle horses. Every room has either shower or tub. Take Southern Pacific to Tucson, Arizona. Riding, swimming, tennis, deck tennis, badminton. Fishing and hunting trips to the Gulf of California by arrangement.

DIAMOND W RANCH. Julia A. Bennett, manager. Mail address, Route 2, Box 464, Tucson, Arizona. Telegraph address, Tucson, Arizona. Season, November 1 to May 15. 25 guests. Private cottages and rooms in main ranch house. Rates, \$50 to \$75 per week per person, including everything the ranch has to offer. Take Southern Pacific to Tucson, Arizona. Ranch car meets guests. Tucson to ranch, 12 miles. Altitude, 2600 feet. Horseback riding, tennis, ping-pong, target shooting, croquet, picnics, motor trips, sun-bathing.

EL RANCHO DEL SOL. Mr. and Mrs. E. G. Bofferding, managers. Mail and telegraph address, Wickenburg, Arizona. Season, October 15 to May 15. 16 guests. Rooms in main ranch house, with private bath or shower. Rates, \$45 to \$60 per week, per person, including horses and guides. Pack trips extra. Take Southern Pacific to Phoenix, Arizona, where ranch car meets guests. Phoenix to ranch, 56 miles, no charge. Hunting, riding, wild horse chasing, polo, tennis, croquet, roping, trips to Indian ruins.

EL RANCHO GRANDE. George R. Gillespie, manager. Mail address, Box 397, Mesa, Arizona. Telegraph address, Mesa, Ariz. Season, October 1 to May 15. Each room has private bath, electric heat. Rooms have fireplaces. Rates on application. Located in foothills 30 miles from Phoenix. Guests met by appointment at either Mesa or Phoenix, Arizona, on Southern Pacific. Horseback riding, fishing, hunting, hiking, boating, golf, tennis, trap shooting, archery.

EL RANCHO ROBLES. Mail address, Oracle, Arizona. Telegraph address, Tucson or Oracle, Arizona. Walter E. Jahn, manager. Season, October 1 to June 1. 30 guests. Single and double rooms with bath; also a few living room suites; separate cottages. Rates, \$70 to \$80 per person per week. Rates include saddle horses and everything except personal laundry. Pack trips extra. Take Southern Pacific to Tucson, Arizona. Ranch car meets guests, no charge. Tucson to ranch, 36 miles. Riding, picnics, barbecues, auto trips, badminton, shooting, hunting, pack trips, dances.

FARAWAY RANCH. E. M. Riggs, owner. Mail address, Willcox, Arizona. Telegraph address, Douglas, Arizona. Open the year 'round. 20 guests. Accommodations in main house and cabins; hot and cold running water. Rates, \$25 to \$35 per person per week, American plan. Horses, \$3.75 to \$5 per day, \$7.50 per week. Take Southern Pacific to Willcox or Douglas, Arizona. Transportation Willcox to ranch, \$2.50 for one, \$3 for two; Douglas to ranch, \$5 for one, \$7.50 for two. Trunks from Willcox,

\$2; from Douglas, \$4; hand luggage free. Willcox to ranch, 36 miles. Douglas to ranch, 68 miles. Horseback riding, hunting, swimming. The ranch is directly adjacent to the Wonderland of Rocks, Chiricahua National Monument.

FLYING V RANCH. Lynn S. Gillham, manager. Mail address, P. O. Box 1991, Tucson, Arizona. Telegraph address, Tucson, Arizona. Season, October 1 to May 1. 34 guests. Cottages, electric light, hot water, private and connecting baths. Rates, \$5.50 to \$8.50 per day, American plan. Saddle horses, \$15 per week, \$50 per month. Pack trips, \$7.50 per day. Take Southern Pacific to Tucson, Arizona. Ranch car meets guests, no charge. Tucson to ranch, 16 miles. Trail and flat riding, polo and rodeo field, goat roping, tennis, dancing, picnics, pack trips, auto trips, cattle activities, billiards, pool.

HACIENDA DE LA OSA. Mail address, Box 1631, Tucson, Arizona. Telegraph address, 20 East Broadway, Tucson, Arizona. Open the year 'round. Rates, \$35 to \$50 per week, including saddle horses. Located 65 miles south of Tucson on Mexican border. Take Southern Pacific to Tucson, Arizona, where you will be met by prearrangement. Good game hunting and fishing accessible.

HACIENDA LOS ENCINOS. Mr. and Mrs. E. N. Carr, proprietors. Mail and telegraph address, Sonoita, Arizona. Open the year 'round. 16 guests. Rates, \$35 to \$65 per week, per person, including riding horses. Lower rates for long stays. Private or connecting baths, steam heat, electric light. Take Southern Pacific to Fairbank, Arizona, where guests will be met. Distance to ranch, 30 miles. Riding, hiking, swimming, hunting, tennis, croquet, badminton, picnics, skeet shooting. Elevation, 4,800 feet.

HAYDEN GUEST RANCH. Mail and telegraph address, Tempe, Arizona. Accommodations in main ranch house and cottages. Cottages have living room, two bedrooms and sunporch. All accommodations have fireplace, furnace heat, electricity, hot and cold water, tub and shower baths. Rates, \$35 to \$70 per week. Special rates by the month or season. Take Southern Pacific to Tempe, Arizona. Golf, hunting, fishing, riding.

H W RANCH. Sydney T. Fritsche, manager. Mail address, Chino Valley, Arizona. Telegraph address, Prescott, Arizona. Open continuously. 5 guests, accommodated in cabins and rooms in ranch house. Rate \$25 per week, including horse. Located northwest of Prescott, at an altitude of 4,500 feet. Good saddle horses. Riding, hunting, fishing, swimming.

JAY SIX CATTLE RANCH. J. G. F. Speiden, manager. Mail and telegraph address, Benson, Arizona. Open all year. 8 guests. Single and double adobe huts, each with bathroom, fireplace, closets. Rate, \$75 per person, per week. Lower rates for extended stays. Horses, guides and pack trips included in rate. Riding, cattle activities, swimming, shooting and trapping in season, hiking, pack trips.

KAY-EL-BAR RANCH. Arthur M. Stewart, manager. Mail and telegraph address, Wickenburg, Arizona. Season, October 1 to April 30. 24 guests. Single and double rooms, each with shower, hot and cold water, furnace heat. Rates, \$65 per week single, \$55 each per week double. Four weeks or more, \$60 per week single, \$50 each per week double. Rates include horses and guides. Pack trips extra. Take Southern Pacific to Phoenix, Arizona, where ranch car meets you by appointment without charge. Phoenix to ranch, 53 miles. Tutoring for children may be had at a small charge.

LA SIESTA DEL MONTE. Mrs. Anna M. Roush, manager. Mail address, Portal, Arizona. Telegraph address, Rodeo, New Mexico, or Douglas, Arizona. Open all year. 8 guests. Rate, \$20 per week, American plan. Saddle horses, \$1 per day. Guides may be had and pack trips arranged at reasonable rates. Take Southern Pacific to Rodeo, New Mexico. Rodeo to ranch, 10 miles. Run mostly as a rest home, but provide horseback riding, hiking, motor trips, dancing and usual activities of a guest ranch.

LAZY R C RANCH. Leb. Chapman, manager. Mail and telegraph address, Wickenburg, Arizona. Season, October to June. 14 guests. Rates, \$35 to \$45 per week, American plan, including saddle horse. Take Southern Pacific to Phoenix, Arizona, where ranch car meets guests without charge, on arrangement. Riding and usual ranch activities. Located on open range. No pack trips.

LOS CERROS. H. A. Elliott, manager. Mail address, Oracle Star Route, Tucson, Arizona. Telegraph address, Tucson, Arizona. Season, October 1 to June 1. 25 guests. Accommodations modern, with electric light, running water in all rooms, connecting and adjoining baths, fireplace heat. Rates, \$40 to \$55 per week, including use of horse, guide and all facilities. Take Southern Pacific to Tucson, Arizona. Ranch car meets guests without charge. Hand baggage free, trunks \$1 each. Tucson to ranch, 20 miles. Riding, hiking, hunting, trapshooting, ping-pong, quoits, sun bathing.

MONTE VISTA RANCH. Lewis C. White, manager. Mail and telegraph address, Wickenburg, Arizona. Season, October 15 to May 15. 25 guests. Rates, \$55 to \$75 per week, American plan, including use of horses and guide. Rates for pack trips on application. Take Southern Pacific to Phoenix, Arizona, where ranch car meets guests without charge. Phoenix to ranch, 50 miles. A real cattle ranch. Riding, tennis, picnics, rodeos, hunting, trapshooting, pack trips.

OLD HOMESTEAD GUEST RANCH. Mrs. Augusta Weiler, manager. Route 5, Box 700, Phoenix, Arizona. Open all year. 6 guests. A modern ranch home in the center of a citrus orchard. Electric light, private baths, hot and cold water. Rate, \$25 per week, American plan, including use of horse. Take Southern Pacific to Phoenix, Arizona, where ranch car will meet you without charge. Phoenix to ranch, 4 miles.

PARADISE VALLEY GUEST RANCH. Prescott, Arizona. Clyde Roland, manager. Season, May 1 to December 1. 14 guests. Individual cottages. Rates, \$25 per week, \$90 per month, including use of horse. Three miles from Prescott in the pines. Riding, swimming, tennis, golf.

PIMA ESTATE GUEST RANCH. Celeste H. Rauch, hostess. Mail address, Laveen, Arizona, Route 1. Telegraph address, Phoenix, Arizona; 'phone 93367. Season, November 1 to May 31. 8 guests. All visitors housed in central building, equipped with furnace heat, electricity, private and adjoining baths. Rates, \$35 to \$45 per week, single; \$60 to \$80 per week, double, American plan. Saddle horse, \$10 per week. Take Southern Pacific to Phoenix, Arizona. Guests met by ranch car without charge, except for trunks. Phoenix to ranch, 14 miles.

QUARTER CIRCLE V BAR RANCH. Charles H. Orme, manager. Mail and telegraph address, Mayer, Arizona. Open all year. 15 guests. Accommodations in lodge and cottages. Rates, \$35 to \$55 per week, American plan, including horses. Pack trips extra. Take Southern Pacific to Phoenix, Arizona. Ranch car meets guests without charge. Phoenix to ranch, 90 miles. Hunting, fishing, swimming, boating, tennis, riding and participating in ranch activities.

RANCHO LINDA VISTA. George S. Wilson, manager. Mail and telegraph address, Oracle, Arizona. Season, October 1 to June 1. 50 guests. Accommodations in modern cottages, each with its own bath, hot and cold water. Rate \$50 per week, including saddle horse. Take Southern Pacific to Tucson, Arizona, where ranch car will meet you. Transportation to ranch (34 miles) \$. A regular cattle ranch. Elevation, 4500 feet. Horseback riding, swimming, tennis, hunting, trapping, pack trips, trap shooting, quaits.

RANCHO SOLEDAD. Mr. and Mrs. Sterbenz, owners. Address, Florence, Arizona. Rate, \$30 per week. Saddle horses \$3 per day. Accommodations in guest house. Individual bathrooms. Take Southern Pacific to Coolidge, Arizona, where you will be met by appointment.

REMUDA RANCH. Jack Burden, manager. Mail and telegraph address, Wickenburg, Arizona. Season, October 1 to May 1. 46 guests. Modern bungalows, with connecting or private baths. Rates, \$5 to \$10 per day, American plan. Saddle horse, \$15 per week, \$50 per month, \$40 per month for three months. Take Southern Pacific to Phoenix, Arizona, where ranch car will meet you without charge. Phoenix to ranch, 54 miles. Altitude, 2076 feet. Riding, cattle, rodeos, tennis, picnics, pack trips, rifle range, swimming and regular ranch activities. A school is maintained on the ranch, offering tutoring and established curriculum for boys and girls. Rate \$40 a month and up.

SAHUARO LAKE RANCH. Phil K. Lewis, manager. Mail and telegraph address, Mesa, Arizona. Season, October 1 to June 1. 50 guests. Accommodations in main building and detached cottages, all strictly modern. Rates, \$40 to \$60 per week, American plan. Saddle horses, \$10 per week. Take Southern Pacific to Mesa, Arizona, where visitors are met on appointment. Mesa to ranch, 23 miles. Boating, swimming, fishing, hunting in season, horseback riding, badminton, table tennis, croquet, chuck-wagon and campfire picnics. Complete rodeo arena with frequent impromptu rodeos. Fully accredited school for children.

SEVEN DASH RANCH. Mrs. Charles H. Banes, manager. Mail address, Dragoon, Arizona. Telegraph address, Willcox, Arizona. Season, October 1 to May 1. 20 guests. Sunny, comfortable rooms with private baths, open fireplaces, in 4 and 6-room cottages. Rates, \$50 and up per week, including saddle horse, guide, lodging and fare from station to ranch. Take Southern Pacific to Dragoon, Arizona. Dragoon to ranch, 12 miles. A regular cattle ranch. Riding, hiking, hunting in season and taking part in ranch activities.

SEVENTY-SIX RANCH. Mrs. W. T. Webb, manager. Mail address, Bonita, Arizona. Telegraph address, Willcox, Arizona. Open all year. 30 guests. Cabins with private bath and modern facilities. Rate, \$35 per week, includes everything the ranch has to offer. Take Southern Pacific to Willcox, Arizona, where ranch car meets you by arrangement. Willcox to ranch, 40 miles. Elevation, 5,000 feet. A real cattle ranch. Riding, swimming, hiking, pack trips and ranch activities.

SILVER BELL GUEST RANCH. Mr. and Mrs. Bud Mann, owners. Mail and telegraph address, Silver Bell Road, Tucson, Arizona. Guest rooms in two, three and four room buildings. Steam heat, electricity, private or connecting baths. Take Southern Pacific to Tucson, Arizona, where you will be met by appointment. Rates on application.

STAR KING RANCH. K. W. Klene, manager. Mail address, Fairbank or Elgin, Arizona. Telegraph address, Elgin, Arizona. Open all year. 8 guests. The guest house is a rambling structure, heated by stoves and fire-

places, equipped with bath and shower. Living is simple and informal. Rates from \$20 per week, \$75 per month, including saddle horse. Take Southern Pacific to Fairbank, Arizona, where ranch car meets you by arrangement. Fare to ranch \$1, distance 20 miles.

TANQUE VERDE RANCH. James P. Converse, manager. Mail address, P. O. Box 1831, Tucson, Arizona. Telegraph address, Tucson, Arizona. Season, October 15 to May 1. 20 guests. Comfortable accommodations in original adobe buildings equipped with modern conveniences. Rates on application. Take Southern Pacific to Tucson, Arizona, where ranch car meets you. Tucson to ranch, 18 miles. Guests ride with cowboys in regular work; hiking, camping, hunting.

TRIANGLE H C RANCH. Harry Knight, manager. Mail address, Harry Knight, Camp Wood, Arizona. Telegraph address, Harry Knight, Prescott, Arizona. Season, April 1 to December 1. Rates, \$40 per week in furnished room with detached bath in separate building. \$50 per week in private room with private bath. Rates include horse, outfit and guide. Take Southern Pacific to Phoenix, Arizona, where ranch car will meet you by pre-arrangement.

TRIANGLE T RANCH. Mr. and Mrs. J. A. McLeod, managers. Mail and telegraph address, Dragoon, Arizona. Season, October 1 to May 1. 30 guests. Accommodations in cottages with baths and electric light. Stoves in all bedrooms and bathrooms. Rates, \$50 to \$65 per week, including guide and saddle horse. Pack trips extra. Take Southern Pacific to Dragoon, Arizona, where ranch car meets you without charge. Station to ranch, 3 miles. Riding, hiking, tennis, ping-pong, hunting in season, cowboy dances, and many other ranch activities.

Y-LIGHTNING RANCH. Mr. and Mrs. F. B. Moson, managers. Mail and telegraph address, Hereford, Arizona. Open all year. 30 guests. Single and double cabins. Private or connecting shower and tub, hot and cold water, electric light, heating stoves. Rates, winter \$40 a week and up; summer, \$30 per week and up. Saddle horses, winter, \$7 per week; summer, \$5 per week. Take Southern Pacific to Hereford, Arizona, where ranch car meets you without charge. Horseback riding, mountain climbing, tennis, hunting, picnics and pack and camping trips.

CALIFORNIA GUEST RANCHES

B-BAR-H RANCH. Charles F. Bender, manager. Mail address, Garnet, California. Telegraph address, Garnet or Palm Springs, California. Season, October 15 to May 1. 60 guests. Rates, \$14 per day, single, and \$24 per day, double, including guides, pack trips and saddle horse. Take Southern Pacific to Palm Springs, California, where ranch car meets you without charge. Distance Palm Springs to ranch, 15 miles. Horseback riding, swimming, tennis, badminton, ping-pong, archery, skeet shooting, hiking.

DEEP WELL GUEST RANCH. Frank H. Bennett, manager. Mail and telegraph address, Palm Springs, California. Season, October 1 to June 1. 60 guests. Guests housed in bedrooms, suites, cottages. Rates \$9 to \$15 per day, single; \$15 to \$20 per day, double. All American plan. Saddle horses and guides extra. Take Southern Pacific to Palm Springs, Cal., where you will be met by appointment without charge. Distance, station to ranch, 12 miles. Horseback riding, paddle tennis, badminton, ping-pong, picnics, swimming pool.

DIAMOND D RANCH. Wallace E. Hiatt, manager. Mail and telegraph address, Willits, California. Open all year. 50 guests. Rooms with private bath in main ranch house. Cabins with central shower and toilets. Meals served in central dining room. Rates, \$40 to \$50 per week; \$150 to \$190 per month, saddle horse included. Private or special guides, \$5 per day. Take Northwestern Pacific Railroad to Willits, California, where ranch car meets you, no charge. Willits to ranch, 2 miles. Largest cattle ranch in northern California with guest accommodations. Good horses. Picturesque ranch life, swimming in private lake, tennis, fishing, small and big game hunting.

HUNEWILL CIRCLE H GUEST RANCH. Stanley H. Hunewill, manager. Mail and telegraph address, Bridgeport, California. Season, May 1 to November 1. 24 guests. Accommodations in ranch house and nearby sleeping cabins. Electric light. A genuine cattle ranch, informal but comfortable. Rates, \$43.50 per week, single; \$38.50 each per week, double. American plan, including saddle horses. Take Southern Pacific to Reno, Nevada, bus from Reno to Bridgeport, where ranch car will meet you by arrangement, without charge. Reno to Bridgeport, 115 miles; Bridgeport to ranch, 6 miles. Riding, fishing, swimming, hiking, ranch activities.

MARSHALLIA GUEST RANCH. Miss Ruth Davis, manager. Mail and telegraph address, Casmalia, California. Open all year. 24 guests. Rooms single or en suite. Tub and shower baths. Electric light and heat. Rates, \$60 and up per week, single; \$110 and up per week, double. Take Southern Pacific to Casmalia, California, where trains met by appointment—no charge. Casmalia to ranch, 5 miles. Rates are American plan and include horses and everything the ranch has to offer, except purely personal expenses. A cattle ranch, with 14 miles of Pacific Ocean frontage, rolling hills, mountains and wooded country.

PIERSON DUDE RANCH. George W. Pierson, managing owner. Telegraph address, Piedra, California. Mail address, Star Route, Box 54B, Sanger, California. Open all year. 20 guests. Accommodations in ranch house, electric lights, hot and cold water and baths. Also in rustic cabins, with stone fireplaces, running water and tub baths. Rates: In ranch house, \$42 and up per week, single; \$72 and up per week, double. In cabins, \$49 per week, single; \$91 per week, double. No charge for horses on regular daily rides. Take Southern Pacific to Fresno, California, where ranch car will meet you by appointment. Fare, Fresno to ranch (34 miles), \$5. No charge for return trip. Riding, swimming, canoeing, fishing and hunting in season, hiking and all other out-door activities that go with a western cattle and horse ranch.

RANCHO CARMELO. K. D. Mathiot, owner. Mail address, Monterey, California. Telegraph address, Carmel or Monterey, California. Open all year. 40 guests. Rates, April 1 to September 15, \$45 and up per week, single; \$40 each and up per week, double. 15 per cent reduction from these rates during other periods of the year. If saddle horses not desired, all rates \$5 per person less per week. Take Southern Pacific to Monterey, California, where trains met by appointment for a reasonable charge. Monterey to ranch, 20 miles. Riding, swimming, hunting, fishing.

SAN CLEMENTE RANCH. Henry Stowell, manager. Mail address, Monterey, California. Telegraph address, Carmel, California. Open all year. 40 guests. Single or double rooms, with bath or shower. Rates, \$7 per day or \$45 per week, American plan. Saddle horses, \$3 per day. Guides, \$5 per day. Take Southern Pacific to Monterey or Salinas, California, where ranch car meets you by arrangement, at a cost of \$2.50.

Ranch is beautifully situated in the Santa Lucia Mountains. Fishing, hunting in season, hiking, riding, swimming, boating, golf at nearby Del Monte.

SMOKE TREE RANCH. Jack Wentworth, manager. Mail and telegraph address, Palm Springs, California. Season, October 15 to May 15. 50 guests. Detached cottages, each room with private bath. Many cottages with private living room and fireplace. Rates: \$56 and up per week, single; \$98 and up per week, double. Saddle horses \$5 per day, \$17.50 per week, \$45 to \$60 per month. Also by the hour. Pack trip rates on application. Take Southern Pacific to Palm Springs, California, where ranch car will meet you by arrangement. Fare, Palm Springs to ranch (13 miles), \$4. Horseback riding. Desert and mountain hiking, badminton, tennis, swimming (separate children's pool) automobile trips, nature study, breakfast rides, picnics.

NEW MEXICO GUEST RANCHES

BONNELL RANCH. Mr. and Mrs. B. J. Bonnell, owners. Mail address, Glencoe, N. M. Telegraph address, Capitan, N. M. Open all year. 30 guests. Rates, \$15 per week, \$50 per month, American plan. Saddle horses, \$5 per week. Guide, \$2 per day. Pack trips—rates on application. Take Southern Pacific to Alamogordo, N. M. Daily stages from Alamogordo stop at ranch—distance 63 miles. Horseback riding, hiking, tennis, fishing, hunting in season.

C X RANCH. Mrs. Angie Cleve, manager. Mail address, Elk, N. M. Telegraph address, Artesia, N. M. Open all year. 7 guests. Rates, \$25 per week, \$65 per month, including saddle horse. Take Southern Pacific to Alamogordo or Cloudcroft, N. M. Auto fare, depot to ranch, \$1.50. Ranch is short distance from Mescalero Indian reservation and Carlsbad Caverns. Riding, hiking, hunting, fishing. Altitude, 6500 feet.

DOUBLE S RANCH. Jos. W. Sharp, manager. Mail address, Cliff, N. M. Telegraph address, Silver City, N. M. (Western Union). Open all year. 20 guests. Accommodations in adobe house and cabins. Rooms with connecting bath; cabins without bath. Rates, \$30 to \$55 per week, including saddle horse. Pack trips extra. Take Southern Pacific to Lordsburg, N. M., where ranch car meets you by arrangement. Transportation, Lordsburg to ranch (85 miles), \$7. Located at base of Mogollon Mountains, altitude 5300 feet. Riding, tennis, mountain climbing, fishing, hunting, camping, swimming.

LONE PINE RANCH. S. W. Land, manager. Mail address, Glencoe, N. M. Telegraph address, via Capitan, N. M. Open all year. 12 guests. Rates, \$15 per week, \$50 per four weeks. Saddle horses, \$5 per week. Rates for guides and pack trips on request. Take Southern Pacific to Alamogordo, N. M., thence stage to ranch. Fare \$1.30, distance 60 miles. An active cattle ranch, with comfortable accommodations. In historic Billy the Kid country. Altitude 6,000 feet. Horseback riding, hiking, hunting, fishing, plus the activities of ranch life.

MI CASA. Mrs. Osborne Wood, manager. Mail and telegraph address, La Luz, N. M. Open all year. 12 guests. Large, sunny rooms with open fireplaces. Rates, \$35 per week, including saddle horse. Guides and pack trips extra. Take Southern Pacific to Alamogordo, N. M., where ranch car will meet you by appointment without charge. Alamogordo to ranch, 8

miles. Riding, tennis, swimming, golf, picnics. Guests accepted only by advance arrangement.

T V BAR RANCH. Mr. and Mrs. Tom Threepersons, proprietors. Mail address, Gila, N. M. Telegraph address, Silver City, N. M. Open all year. 15 guests. Rate, \$7 per day, including horse. Pack trips extra. Take Southern Pacific to Deming, N. M. Ranch car will meet you at Silver City, N. M., without charge. Silver City to ranch, 31 miles. Altitude 5,000 feet. Riding, hiking, swimming, fishing, picnics, ranch activities.

NEVADA GUEST RANCHES

LONE STAR RANCH. J. L. Hash, owner. Mail and telegraph address, Reno, Nevada. Open all year. Rates, \$20 to \$25 per week. Saddle horses at reasonable rates. Take Southern Pacific to Reno, Nevada, where ranch car meets you by arrangement—no charge. Reno to ranch, 3 miles. A comfortable home, where guests find rest, quiet and excellent home cooking. Riding, hot springs, swimming, trap shooting.

MONTE CRISTO RANCH. Emma Warfield McCormick, manager. Mail and telegraph address, Sutcliffe, Nevada. 20 guests. Take Southern Pacific to Reno, Nevada, where ranch car will meet you by appointment. Reno to ranch, 35 miles. Rates, \$7 per day or \$200 per month, American plan. Comfortable ranch house and cabins, with all modern conveniences. Maid and valet service. Pack trips, rodeos, roping, riding, hiking, swimming, boating, fishing, picnics, motor trips, hunting in season.

NEVADA STOCK FARM DUDE RANCH. Wm. Hill, manager. Mail and telegraph address, Reno, Nevada. Open all year. 65 guests. Rate, \$40 per week, including saddle horse. Take Southern Pacific to Reno, Nevada, where ranch car meets you by appointment, without charge. Reno to ranch, 3 miles. Private rock cottages, with private baths, electric light, hot and cold water, oil-burner, hot water radiator heat. Horseback riding, tennis, moving pictures, swimming. Autos and pack trips without charge to ghost cities and points of interest. Hunting and fishing in season.

THE SAGE. Hill Sharp, manager. Mail address, Sutcliffe, Nevada. Telegraph address, Reno, Nevada. Open all year. 60 guests. Cabin tents; rooms with and without bath; private cottages. Rates, \$5.50 to \$10 per day, single; \$10 to \$18 per day, double, including horses. Daily station wagon service, ranch to Reno, no charge to guests. Take Southern Pacific to Reno, where you will be met by appointment. Located on the Piute Indian reservation, elevation 3783 feet. Horseback riding, swimming, fishing, hiking, sunbasking, trips to places of interest.

TH RANCH. Neill West, owner. Mail and telegraph address, Sutcliffe, Nevada. Open all year. 50 guests. Accommodations in cabins, with or without private bath. Rates, \$40 to \$50 per week, including guide and horses. Pack trips extra. Take Southern Pacific to Reno, Nevada, where ranch car meets you by appointment, without charge. Reno to ranch, 35 miles. Elevation 4,000 feet. Riding, hiking, swimming, fishing and hunting in season.

TEXAS GUEST RANCHES

GALLAGHER RANCH. Mrs. James McKay, manager. Mail address, P. O. Box 1138, San Antonio, Texas. Telegraph address, Gallagher Ranch, San Antonio, Texas. Season, November 1 to May 1. 35 guests. Rooms,

single or en suite, with or without bath. Also girls' dormitory. Rates, \$50 to \$80 per week, including guide and horses. Take Southern Pacific to San Antonio, Texas, where ranch car meets you by appointment—no charge. San Antonio to ranch, 30 miles. Located in wooded hill country, elevation 2,000 feet. Horseback riding, picnics, rodeos, swimming pool, barbecues, ping-pong.

MITRE PEAK RANCH. A. J. Tippet, proprietor. Mail and telegraph address, Alpine, Texas. Open all year. 100 guests. Accommodations in ranch house and lodges. Rates from \$7 to \$17.50 per week. Saddle horses, 50c per hour, \$2.50 per day. Guides, \$2 per day. Take Southern Pacific to Alpine, Texas. Alpine to ranch, 13 miles. Horseback riding, fishing, mountain climbing, swimming, golf, picnics, archery, rifle practice, ranch activities.

PRADE GUEST RANCH. E. T. Prade, proprietor. Mail and telegraph address, Leakey, Texas. Open all year. 25 guests. Rock cabins, red cement floors, cedar beamed ceilings, 9 windows to a bedroom, bath to each two bedrooms, electricity and sewerage. Rates, \$32.50 per week, single; \$30 each per week, double. Rates include horses, guides, pack trips. Take Southern Pacific to Sabinal, Texas, where ranch car meets you by appointment. Sabinal to ranch (60 miles) \$5. Riding, fishing, picnics, hunting in season.

WALDEMAR RESORT RANCH. Miss Doris Johnson, manager. Mail address, Hunt, Texas. Telegraph address, Kerrville, Texas. Season, January 1 to April 15. 50 guests. Accommodations in main lodge and rock cottages. Rates, \$45 to \$65 per week. Discounts for stays of one month or more. Take Southern Pacific to San Antonio, Texas. San Antonio to ranch, 85 miles. Horseback riding, fishing, archery, canoeing, target shooting, golf, bowling, ping-pong, quoits, tennis, billiards.

MEXICO GUEST RANCH

RANCHO EL ALAMO. Mrs. J. K. Drumm, manager. Mail address, Magdalena, Sonora, Mexico. Season, October 1 to May 1. 25 guests. Take Southern Pacific of Mexico to Magdalena, Sonora, Mexico. Altitude 3,500 feet. A walled, towered and terraced house of adobe and tile, in a valley surrounded by mountains. Large guest rooms, each with private bath. Enclosed pool, sun deck for sun-bathing on roof of main building. Riding, mountain climbing, hiking, picnicking, hunting.

RESORT HOTELS

Those who wish to winter in the Southwest but do not care for guest ranch life will find in Southern Arizona a number of high-class winter resort hotels providing the best of accommodations and service combined with delightful suburban surroundings, in a climate that makes outdoor life enjoyable the winter through. A list of the hotels follows.

ARIZONA BILTMORE. 8 miles northeast of Phoenix. Address, Box 2007, Phoenix, Arizona. About 300 guests. Season, November 1 to May 1. Accommodations in main building, cottages or individual houses. A modern structure of concrete on a 1,350-acre desert tract. Polo, tennis, swimming, golf, trap-shooting, riding, picnicking, weekly rodeo, nightly supper dansant.

ARIZONA INN. 2½ miles northwest of Tucson. Address, Tucson, Arizona. Season, November 1 to May 15. Altitude, 2400 feet. 75 guests. A desert resort of Spanish and Indian architecture, built in a circle around a patio. Accommodations in cottages. Large rooms, twin beds, private baths, sun porches, private entrances. Tennis, golf, swimming, riding.

CAMELBACK INN. 11 miles northeast of Phoenix. Mail address, Phoenix, Arizona. Guest rooms in Spanish-type bungalows, arranged for occupancy single or en suite. Oil furnace heat, private baths, room phones, Western Union service. Riding, putting green, badminton, shuffle board, ping-pong, croquet, horseshoes, golf driving net. Season, December 15 to May 1. 75 guests.

CASA SAHUARO. Address, Casa Grande, Arizona. A small inn in the desert. 11 guest rooms. The atmosphere of a private home. No attempt at entertaining. Season, November to May.

EL CONQUISTADOR. On a 120-acre tract just outside the city of Tucson, Arizona. A commodious main building containing dining room, lobby piazzas and some guest accommodations. Surrounded by guest bungalows which may be rented en suite or as individual rooms. 110 guests. Season, about December 1 to May 1. Riding, golf (three courses a few minutes from hotel), tennis on grounds, sun bathing on roof, dancing, bridge, musical entertainment.

EL PORTAL. Mrs. Gladys B. Sayner, manager. Address, Mesa, Arizona. Season, November to May. All rooms with private bath. Connecting suites with sitting rooms available. Steam and hot air heat. Tournament tennis court, shuffleboard, badminton and putting green on hotel grounds. Swimming pool two blocks distant. Picnics, chuck wagon dinners on the desert, motor trips to Indian country. Fishing available in season. Take Southern Pacific to Mesa, Arizona.

INGLESIDE INN. Mail address, Phoenix, Arizona. Ten miles from Phoenix, with all the advantages of the desert climate. The Inn centers a large acreage of lawn, flowers and orange, olive and grapefruit trees in full bearing. Lounge, dining and service rooms in main building. Cottages conveniently near, but remote enough for privacy. Steam heat. 60 guests. Golf, horseback riding, tennis, hikes, excursions and other diversions. Season, November to May.

JOKAKE INN. Mail address, Jokake, Arizona. Ten miles from Phoenix on southern slope of Camelback Mountain. Adobe construction. Cottages grouped around main building. All modern appointments. Schools adjacent to inn. 100 guests. Three excellent golf courses close by, riding, swimming in heated outdoor pool, tennis, hiking, picnicking, croquet, roque, archery, indoor amusements. Season, October 15 to May 1.

LODGE ON THE DESERT. Homer D. Lininger, manager. Address, Box 1151, Tucson, Arizona. Located on the desert, ten minutes from the heart of Tucson. Not a guest ranch or hotel, but a select lodge. 16 guests. Season, September 15 to May 15. Accommodations in the main lodge and patio houses. Single and double rooms with private bath. Rates, \$10 per day and up, American plan. Badminton, deck tennis or paddle tennis and swimming pool on grounds. Golf and polo grounds close by. Take Southern Pacific to Tucson, Arizona, where you will be met by appointment.

SAN MARCOS. Robert Foehl, managing director. Address, Chandler, Arizona. Accommodations in the hotel or private bungalows. Hotel rooms single or en suite. Bungalows steam heated; private baths, telephones and

individual gardens. Size, two to six rooms. 18-hole, all-grass golf course, swimming, bicycling, archery, tennis, badminton, riding. Fishing and hunting near by in season. Take Southern Pacific to Chandler, Arizona.

VAH-KI INN. Coolidge, Arizona. Small, exclusive, modern inn on outskirts of the town. Buildings of adobe in Spanish Colonial style, adjoining Casa Grande National Monument. Accommodations in main building and nearby cottages. 20 guests. Season, October 1 to May 1. Sun bathing, riding, tennis.

THE WIGWAM. Mail address, Litchfield Park, Arizona. Located near Phoenix, on the edge of a vast desert district. Combines the best features and services of the inn, hotel and guest ranch. Accommodations in bungalows surrounding the main Wigwam. 85 guests. Season, November 15 to May 1. Good schools near by. Golf, tennis, swimming, desert riding, bicycling, rodeos.

RANCH SCHOOLS

Listed below are ranch schools located in southern Arizona. The balmy winter climate of this section, permitting an active outdoor life, is of inestimable benefit to adolescents.

The schools are staffed with competent instructors, and have high scholastic standards. The recreational activities of students are of the nature of those found on the guest ranch and are carefully supervised with the object of combining relaxation with physical development. These schools provide under one management the best features of both the guest ranch and the private school.

Pupils suffering from communicable diseases are not accepted.

ARIZONA DESERT SCHOOL. Address, P. O. Box 1351, Tucson, Arizona. For boys. Located in the foothills of the Catalina Mountains, 10 miles from Tucson. Resident pupils only. Ages accepted, 8 to 15. School year, October to May. Physician; resident nurse. Course of study prepares for entrance to the fourth form of leading college preparatory schools. Complete information furnished by the school on application. Take Southern Pacific to Tucson, Arizona.

ARIZONA MILITARY ACADEMY. Address, Nogales, Arizona. Three separate schools. Upper school covers the work of the Senior, Junior and Sophomore years of high school. Middle school covers the work of the freshman year of high school, and the eighth and seventh grades of grammar school. Lower school covers the work of the sixth, fifth and fourth grades of grammar school. Summer camps are operated in Arizona in addition to the winter school, and tutoring is offered at camps when needed by the student. For full details write the school direct. Take Southern Pacific to Nogales, Arizona.

ARIZONA SUNSHINE SCHOOL. Address, P. O. Drawer 430, Tucson, Arizona. An outdoor school for children. Day pupils only. Students accepted from pre-school age through the eighth grade. Co-educational. Write the school for particulars. Take Southern Pacific to Tucson, Arizona.

EVANS SCHOOL. Address, Tucson, Arizona. For boys. Located 16 miles from Tucson, in the foothills. Resident pupils only. Ages accepted, 12 or over. School year, last Wednesday in September to third Saturday in May. School physician, resident nurse, infirmary. Course

comprises six years of college preparatory work. Complete information furnished by the school on application. Take Southern Pacific to Tucson, Arizona.

FRESNAL RANCH SCHOOL. Address, Tucson, Arizona. Located on a 15,000-acre ranch, about thirty miles from Tucson. Resident pupils. Accommodations for thirty boys between the sixth and twelfth grades. Complete information furnished by the school on application. Take Southern Pacific to Tucson, Arizona.

GREEN FIELDS SCHOOL. Address, Green Fields-Circle Double A Ranch, Tucson, Arizona. Located 9 miles from Tucson. Twenty resident and a limited number of day pupils. Work planned to meet requirements of eastern preparatory schools or the college entrance examination board. Write the school for complete information. Take Southern Pacific to Tucson, Arizona.

HACIENDA DEL SOL. Address, Tucson, Arizona. For girls. Located in the Santa Catalina foothills, ten miles from Tucson. Resident pupils. Girls from 12 to 18 years accepted. School year, October 1 to May 1. School doctor, resident nurse. The lower school covers seventh and eighth grade work, and the upper school offers a choice of a general academic course leading to graduation; or a college preparatory course. Complete information furnished by the school on application. Take Southern Pacific to Tucson, Arizona.

JOKAKE SCHOOL. Address, Jokake, Arizona. Located 10 miles from Phoenix, Arizona. For girls. Resident and day pupils. School year, October to May. Ages accepted, beginning at 6 years. Kindergarten, primary department, preparatory department, college preparatory course and a modified general course. For full information write the school direct. Take Southern Pacific to Phoenix, Arizona.

JUDSON SCHOOL FOR BOYS. Address, Phoenix, Arizona. Located twelve miles northeast of Phoenix. Term, October 5 to April 22, with customary vacation periods. All regular grammar school subjects are taught preparatory to admission to junior high school or a regular academic seventh grade. Physical education required of all pupils, with a large part of each day spent outdoors. Complete information

furnished by the school on application. Take Southern Pacific to Phoenix, Arizona.

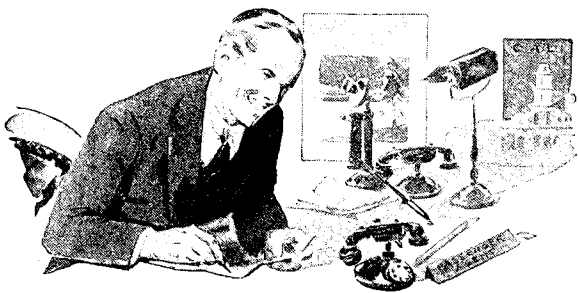
JUDSON SCHOOL FOR GIRLS. Address, Phoenix, Arizona. Located ten miles northeast of Phoenix. Resident and day school pupils. Term, October 7 to May 2, with usual holiday vacations. All regular grammar school subjects are taught preparatory to admission to junior high school, or a regular academic seventh grade. Complete information furnished by the school on application. Take Southern Pacific to Phoenix, Arizona.

PALO VERDE RANCH SCHOOL FOR BOYS. Address, Mesa, Arizona. Located 10 miles from Mesa, Arizona. School year, October 5 to June 5. Resident pupils, limited to 25. School physician, resident nurse, infirmary. Ages accepted, 6 to 16 years. This schools also operates a summer camp at Escondido Lodge, Prescott, Arizona, for boys. Season, June 1 to September 1. Complete information furnished by the school on application. To reach the school, take Southern Pacific to Mesa, Arizona.

SOUTHERN ARIZONA SCHOOL FOR BOYS. Address, Sabino Canyon, Tucson, Arizona. Resident pupils only. Extensive outdoor recreation activities under supervision. Physician, resident nurse, infirmary. All academic courses for college preparation from sixth through twelfth grades offered. Students prepared for college entrance board examinations. School year, last week of September to middle of May. Complete information furnished by the school on application. Take Southern Pacific to Tucson, Arizona.

THE THOMAS SCHOOL. Address, Tucson, Arizona. Co-educational. Located on the desert, eight miles east of Tucson. School term, October 1 to May 1. Ages accepted, 5 to 14 years, limited to 30 pupils. Resident nurse. For complete information, write the school direct. Take Southern Pacific to Tucson, Arizona.

TUCSON SCHOOL FOR BOYS. Address, P. O. Box 2071, Tucson, Arizona. Resident and day pupils. School year, October 1 to May 31. Thorough preparation for college and the college entrance board examinations. For complete information write the school direct. Take Southern Pacific to Tucson, Arizona.



Let the Southern Pacific Agent help you plan your trip

Your nearest Southern Pacific representative will gladly give you full information as to passenger fares, Pullman reservations, time schedules, etc. He will also attend to such details as tickets, hotel and Pullman reservations, etc., for you, or help you with your freight shipments.

Southern Pacific representatives in important cities in the Middle West and East are shown below and in addition Southern Pacific agents are located in practically every city and town reached by its lines. Southern Pacific representatives are at your service during your journey.

Southern Pacific Representatives

ATLANTA, GA.....	815 Volunteer Bldg.....	D. Asbury, <i>General Agent</i>
BALTIMORE, MD.....	214 Baltimore Life Bldg.....	W. B. Johnson, <i>General Agent</i>
BIRMINGHAM, ALA.....	203-8 Empire Bldg.....	S. J. Brown, <i>General Agent</i>
BOSTON, MASS.....	294 Washington St., Rm. 209.....	E. S. Leavitt, <i>General Agent</i>
BUFFALO, N. Y.....	204 Ellicott Square Bldg.....	G. H. Vogel, <i>General Agent</i>
CHICAGO, ILL.....	77 E. Jackson Blvd.....	J. H. Desherow, <i>Gen. Agt., Pass'r Dept.</i>
CINCINNATI, OHIO.....	408 Traction Bldg.....	Robt. McDowell, <i>General Agent</i>
CLEVELAND, OHIO.....	1116 Hippodrome Bldg.....	E. G. Cook, <i>General Agent</i>
DENVER, COLO.....	409 U. S. Nat. Bank Bldg.....	E. H. Williams, <i>General Agent</i>
DETROIT, MICH.....	205-7 Majestic Bldg.....	L. H. Trimble, <i>General Agent</i>
INDIANAPOLIS, IND.....	309 Merchants Bank Bldg.....	T. B. Brennan, <i>General Agent</i>
KANSAS CITY, MO.....	501 Railway Exchange Bldg.....	J. G. Lowe, <i>General Agent</i>
LOUISVILLE, KY.....	296 Starks Bldg.....	Paul E. Carneck, <i>Dist. Frt. and Pass'r Agt.</i>
MEMPHIS, TENN.....	716 Exchange Bldg.....	C. A. Bevis, <i>General Agent</i>
MEXICO CITY, MEX.....	Avenida Cinco de Mayo, No. 32.....	F. V. Stark, <i>Traffic Mgr.</i>
MINNEAPOLIS, MINN.....	619 Metropolitan Life Bldg.....	R. K. Smith, <i>General Agent</i>
MONTERREY, MEX.....	Langstroth Bldg.....	Alfonso Marquez, <i>Gen. Agt. for Nor. Mexico</i>
NEW YORK, N. Y.....	535 5th Ave. (at 44th), Room 1012	

.....F. L. Pickering, *General Agent*
 John N. Field, *District Passenger Agent*
 531 Fifth Ave. (at 44th St.)—Southern Pacific Ticket Office
W. J. Hanrahan, *City Passenger and Ticket Agent*

OKLAHOMA CY., OKLA.....	924 Perrine Bldg.....	J. A. Eads, <i>General Agent</i>
PHILADELPHIA, PA.....	600 Packard Bldg.....	F. T. Brooks, <i>General Agent</i>
PITTSBURGH, PA.....	1215 Gulf Bldg.....	H. F. Starke, <i>General Agent</i>
SALT LAKE CITY, UTAH.....	41 South Main St.....	D. R. Owen, <i>General Agent</i>
SEATTLE, WASH.....	1405 Fourth Ave.....	B. C. Taylor, <i>General Agent</i>
ST. LOUIS, MO.....	445 Cotton Belt Bldg.....	L. B. Banks, <i>General Agent</i>
VANCOUVER, B. C.....	474 Granville St.....	C. G. Alton, <i>Can. Pass'r and Ticket Agt.</i>
WASHINGTON, D. C.....	1201 Shoreham Bldg.....	A. A. Price, <i>General Agent</i>

J. R. ORMANDY, *General Passenger Agent*, Portland, Ore.
 F. C. LATHROP, *General Passenger Agent*, San Francisco, Cal.
 H. P. MONAHAN, *General Passenger Agent*, Los Angeles, Cal.
 J. D. MASON, *General Passenger Agent*, El Paso, Texas
 J. H. MCCLURE, *General Freight and Passenger Agent*, Phoenix, Ariz.
 J. T. MONROE, *Passenger Traffic Mgr.*, Texas and Louisiana Lines, Houston, Texas.
 W. C. MCCORMICK, *General Passenger Agent*, New Orleans, La.
 H. H. GRAY, *General Passenger Agent*, New York, N. Y.
 O. P. BARTLETT, *Passenger Traffic Manager*, Chicago, Ill.
 WILLIAM SIMMONS, *Traffic Mgr.*, Southern Pacific Steamship Lines, New York, N. Y.
 L. G. HOFF, *Traffic Manager*, Mexican Lines, Guadalajara, Mex.

C. S. FAY, *Vice President and Traffic Mgr.*, Texas and Louisiana Lines,
 Houston, Texas.

F. S. MCGINNIS, *Vice President*, System Passenger Traffic, San Francisco, Cal.,
 and Houston, Texas.